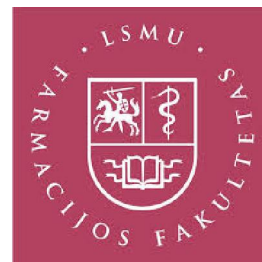
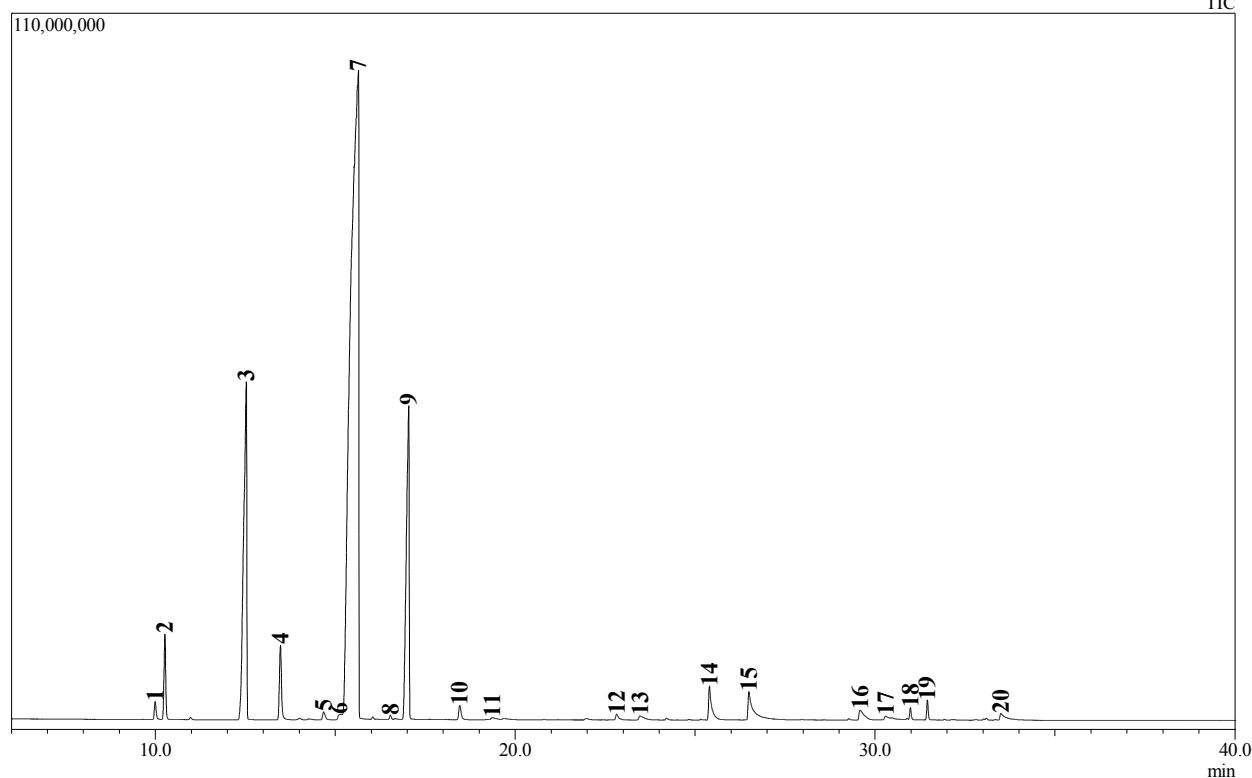




# Kupole - CITRI LIMONIS



Chromatogram Kupole Citri Limonis C:\GCMSsolution\Data\LSMU Vaistine\Duomenys\Kupole Citri Limonis.gcd



Peak#	R.Time	Area	Area%	Name
1	9.994	9448576	0.39	Thujene <alpha->
2	10.266	44321531	1.82	.alpha.-Pinene
3	12.528	317038349	13.04	.beta.-Pinene
4	13.478	45777945	1.88	.beta.-Myrcene
5	14.678	5848290	0.24	2-Carene
6	15.117	6070384	0.25	p-Cymene
7	15.638	1598127822	65.75	Limonene
8	16.536	2142787	0.09	.beta.-Ocimene
9	17.040	262914788	10.82	.gamma.-Terpinene
10	18.462	10399364	0.43	Isoterpinolene
11	19.363	2498053	0.10	Linalool
12	22.823	4870438	0.20	Terpinen-4-ol
13	23.474	6159469	0.25	.alpha.-Terpineol
14	25.404	29556815	1.22	.beta.-Citral
15	26.501	42234639	1.74	Citral
16	29.592	14128177	0.58	Neryl acetate
17	30.299	4485960	0.18	Geranyl acetate
18	30.988	5104509	0.21	Caryophyllene
19	31.459	8973224	0.37	trans-.alpha.-Bergamotene
20	33.502	10343997	0.43	.beta.-Bisabolene
		2430445117	100.00	